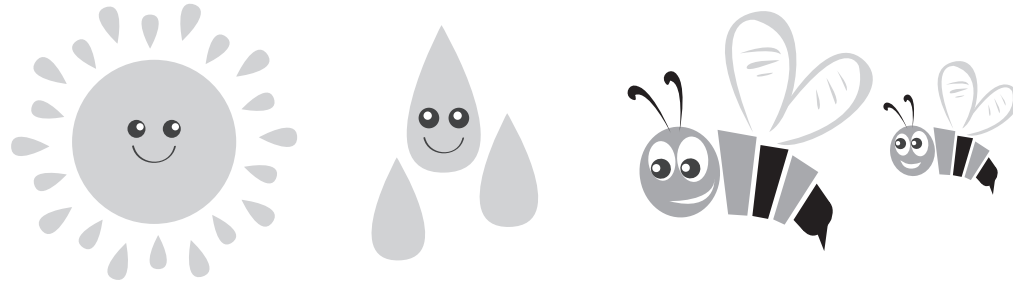




# WATERMELON'S BEST FRIENDS

READ ABOUT WATERMELON AND FILL IN THE BLANKS.



## A WATERMELON NEEDS SUN, WATER AND BEES.

Small watermelon plants are planted in soil. Bees visit the yellow watermelon flowers. The bees move pollen from one plant to another plant. A plant vine grows and makes a watermelon.

The watermelon sits in the sun. The watermelon gets a yellow spot.  
The yellow spot is where it sat on the ground!

1. List 3 things a watermelon needs to grow. S \_ \_ \_ \_ T \_ \_ \_ e \_ \_ \_
2. What do bees move? \_\_\_\_\_
3. Watermelon grows on a V \_ \_ \_ \_ .
4. Where does a watermelon sit while it is growing? \_\_\_\_\_
5. What color is the spot on a watermelon? \_\_\_\_\_

